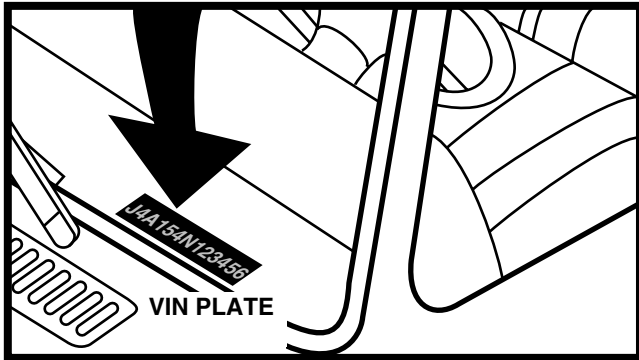


## Vehicle Engine Identification



In some vehicles, there are two or more engines that are of the same size but do not use the same products.

To identify the proper product for your vehicle, you must match the engine code from your vehicle identification number with the character listed in our Application Section.

For vehicles manufactured by Chrysler, Ford, GM or Saab from 1972 to 1980, use the fifth character. For vehicles manufactured by Chrysler, Ford, GM or Saab from 1981 to 2012, use the eighth character.

For vehicles manufactured by Mitsubishi from 1983 to 2012, use the eighth character.

For vehicles manufactured by AM General from 1995 to 2012 use the fourth character.

For vehicles manufactured by AMC/EAGLE (except Jeep) from 1972 to 1980 use the seventh character, from 1981 to 1988 use the fourth character, and 1989-1998 use the eighth character.

For vehicles manufactured by Jeep from 1972 to 1974 (up to SN #100000), use the eighth character, from 1974 to 1980 use the seventh character, from 1981 to 1988 use the fourth character, and from 1989-2012 use the eighth character.

For vehicles manufactured by Hyundai from 1981 to 2012 use the eighth character.

For vehicles manufactured by Jaguar - Landrover from 1981 to 2012 use the seventh character.

For vehicles manufactured by Kia from 1994 to 2012 use the eighth character.

For vehicles manufactured by Nissan (except Quest) from 1995 to 2012 use the fourth character.

For vehicles manufactured by Subaru - Suzuki from 1981 to 2012 use the sixth character.

### CHRYSLER, FORD, GM and SAAB

1972-1980

**1H35L7R100001**

↑ ENGINE CODE  
Fifth Character

1981-2012

**1G3AL69N6CM100001**

↑ ENGINE CODE  
Eighth Character

### MITSUBISHI

1983-2012

**JA4MT41PMWP123456**

↑ ENGINE CODE  
Eighth Character

### AM GENERAL

1995-2012

**137XE84H2MRE13201**

↑ ENGINE CODE  
FOURTH CHARACTER

### AMC/EAGLE (except Jeep)

1972-1980

**A3M798Z700001**

↑ ENGINE CODE  
Seventh Character

1981-1988

**2CEUN3870GB529063**

↑ ENGINE CODE  
Fourth Character

1989-1998

**2E3BB66U9LH038364**

↑ ENGINE CODE  
Eighth Character

### JEEP

1972-1974

(up to SN #100000)

**J4A154CN00001**

↑ ENGINE CODE  
Eighth Character

1974-1980

(from SN #100000)

**J4A154N100000**

↑ ENGINE CODE  
Seventh Character

1981-1988

**1JTTH7560G430952**

↑ ENGINE CODE  
Fourth Character

1989-2012

**1J4ET37L5LT438789**

↑ ENGINE CODE  
Eighth Character

### HYUNDAI

1981-2012

**KMBRF23S3MZ000001**

↑ ENGINE CODE  
EIGHTH CHARACTER

### JAGUAR - LANDROVER

1981-2012

**SAJAV130-GR000002**

↑ ENGINE CODE  
SEVENTH CHARACTER

### KIA

1994-2012

**KNASA231XS0000001**

↑ ENGINE CODE  
EIGHTH CHARACTER

### NISSAN (except Quest)

1995-2012

**JN1PS3546X000001**

↑ ENGINE CODE  
FOURTH CHARACTER

### SUBARU - SUZUKI

1981-2012

**JF1AC45BYGCZ00001**

↑ ENGINE CODE  
SIXTH CHARACTER

## Dodge Truck Engine Identification

On 1967-81 Dodge Trucks the engine model designation consists of the cubic inch displacement followed by a dash number. In many cases, the correct dash number must be known to determine the correct spark plugs to be used. The correct dash number is determined by first locating the Vehicle Identification Plate (rear face of driver's door or driver's side latch post).

Inspect the plate for a Model Serial Number Code (see below). Do not confuse this code with the Vehicle Identification Number (VIN). The fifth character of the Model Serial Number Code should be used in conjunction with the following chart to determine the correct dash number contained in the engine model designation.

ENGINE CODE	ENGINE C.I.D.	APPLICABLE YEARS
A	440-3 (4 bbl.)	72-81
A	198	67-71
B	225-1 (2 bbl.)	67-81
C	225-2 (1 bbl.)	67-81
D	440-1 (4 bbl.)	72-81
D	251-3	67-71
E	318-1 (2 bbl.)	67-81
F	360-1 (2 bbl.)	78-81
F	360	69-77
G	318-3 (2 bbl.)	67-81
J	400-1	74-77
J	400	72-73
J	383	68-71
K	360-3 (2 bbl.)	74-81
K	361-2	67-73
L	361-3	67-77
M	361-4	67-77
N	225-1 (1 bbl.)	74-81
N	413-1	67-73
P	318-1 (4 bbl.)	78-79
P	413-2	72-77
R	413-3 (4 bbl.)	67-81
S	360 Hi-Perf. (4 bbl.)	78-81
S	478	69-72
T	360-1 (4 bbl.)	75-81
T	549	69-73
W	230	69-72
X	Special 6 cyl. gasoline	67-81
V	Special 8 cyl. gasoline	67-81

## Displacement Conversion Chart For Popular Engine Sizes

LITERS	CUBIC INCHES	LITERS	CUBIC INCHES	LITERS	CUBIC INCHES	LITERS	CUBIC INCHES	LITERS	CUBIC INCHES	LITERS	CUBIC INCHES
1.0	61	2.0	122	3.1	189	4.2	255	5.3	323	6.6	403
1.1	67	2.1	128	3.2	196	4.2	258	5.4	330	6.8	415
1.2	73	2.2	134	3.2	198	4.3	260	5.6	342	6.9	420
1.3	79	2.2	135	3.3	198.5	4.3	262	5.7	345	7.0	425
1.4	86	2.3	140	3.3	200	4.3	265	5.7	350	7.0	427
1.5	92	2.4	146	3.4	207	4.4	267	5.8	351	7.0	429
1.6	96	2.5	150	3.5	214	4.5	275	5.9	360	7.2	440
1.6	97	2.5	151	3.6	220	4.6	281	6.0	366	7.3	445
1.6	97.6	2.6	156	3.7	225	4.8	292	6.0	368	7.4	454
1.6	98	2.6	158.6	3.8	229	4.9	300	6.1	370	7.5	455
1.7	105	2.7	165	3.8	231	4.9	301	6.2	379	7.5	460
1.8	109.5	2.8	171	3.8	232	5.0	302	6.2	381	7.8	488
1.8	109.8	2.8	173	3.9	238	5.0	304	6.3	384	8.0	488
1.9	118	2.9	177	4.0	243	5.0	305	6.4	390	8.1	494
2.0	121	2.9	180	4.1	250	5.0	307	6.5	395	8.2	500
2.0	121.7	3.0	184	4.1	252	5.2	318	6.6	400	8.8	534

1000cc = 1 LITER.

1000cc = 1 LITER.